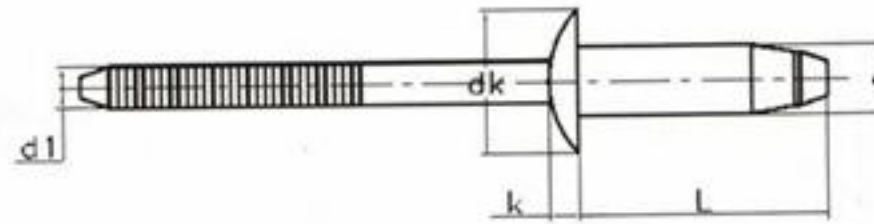


**Alu./Alu.**  
**Hem-Firm Type**  
**Blind Rivet**  
**Dome Head**

Length Unit: mm

d	L	Grip Range		Hole Size Φ	dk	k	d <sub>1</sub>	L <sub>1</sub>	Minimum Compressive KN	Minimum Shear Force KN
		min	max							
Φ4.8 +0.08 -0.15	9.0	1.50	3.50	4.9-5.1	10.2	2.5	3.1	27	1.6	1.7
	11.5	3.50	6.00							
	14.0	6.00	8.00							
	16.5	8.50	11.00							
	19.0	11.00	13.50							
	22.5	13.00	15.00							
Φ6.4 +0.08 -0.15	10.5	2.80	4.80	6.6-6.8	13.4	3.5	4.2	27	3.4	4.2
	14.5	6.80	8.80							
	16.5	8.80	10.80							
	18.5	10.80	12.80							
	20.5	12.80	14.80							
	22.5	14.80	16.80							
	24.5	16.80	18.80							
	26.5	18.80	20.80							

**Powerchang®**  
**Blind Rivets**

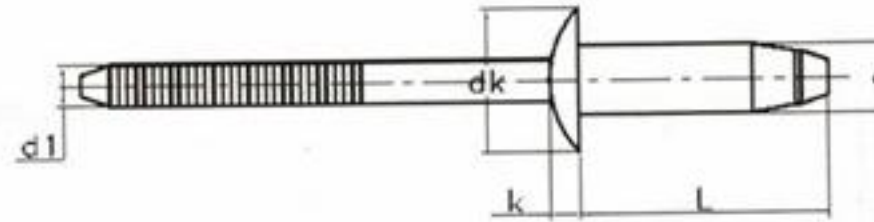


**Stainless Steel /  
Stainless Steel  
Hem-Firm Type  
Blind Rivet  
Dome Head**

Length Unit: mm

d	L	Grip Range		Hole Size Φ	dk	k	d <sub>1</sub>	L <sub>1</sub>	Minimum Compressive KN	Minimum Shear Force KN
		min	max							
Φ4.8 +0.08 -0.15	9.0	1.50	3.50	4.9-5.1	10.2	2.5	3.1	27	4.9	6.0
	11.5	3.50	6.00							
	14.0	6.00	8.00							
	16.5	8.50	11.00							
	19.0	11.00	13.50							
Φ6.4 +0.08 -0.15	10.5	2.00	4.50	6.6-6.7	13.4	3.5	4.2	27	8.3	14.0
	12.5	4.00	6.50							
	14.5	6.00	8.50							
	16.5	8.00	10.50	6.5-6.6						
	18.5	10.00	12.50							
	20.5	12.00	14.50							
	22.5	13.00	16.00							
	24.5	15.00	18.00							
	26.5	17.00	20.00							
Φ7.8 +0.08 -0.15	13.5	4.00	7.00	8.0-8.3	18	4.2	5.2	27	12.5	20.0
	16.5	7.00	10.00							
	19.5	9.00	12.00							
	22.5	12.00	15.00							

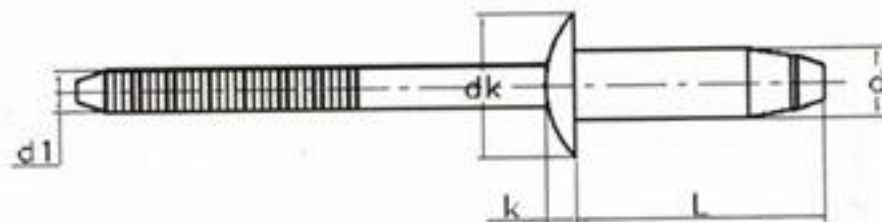




**Steel/Steel  
Hem-Firm Type  
Blind Rivet  
Dome Head**

Length Unit: mm

d	L ±0.99	Grip Range		Hole Size Φ	dk	k max	d <sub>1</sub> max	L <sub>1</sub> min	Minimum Compressive	Minimum Shear Force
		min	max						KN	KN
Φ4.8 +0.08 -0.15	9.0	1.50	3.50	4.9-5.1	10.2	2.5	3.1	27	3.5	4.5
	11.5	3.50	6.00						3.5	6.0
	14.0	6.00	8.00						3.5	6.2
	16.5	8.50	11.00						3.5	6.2
	19.0	11.00	13.50					3.5	6.2	
Φ6.4 +0.08 -0.15	9.0	1.50	3.50	6.7-6.9	13.4	3.5	4.2	27	6.4	6.8
	10.5	2.80	4.80						6.4	9.2
	12.5	4.80	6.80						6.4	10.0
	14.5	6.80	8.80						6.4	10.0
	16.5	8.80	10.80						6.4	11.0
	18.5	10.80	12.80						6.4	11.0
	20.5	12.80	14.80						6.4	11.0
	22.5	14.80	16.80						6.4	11.0
	24.5	16.80	18.80						6.4	11.0
	26.5	18.80	20.80						6.4	11.0
	28.5	20.80	22.80						6.4	11.0
	30.5	22.80	24.80						6.4	11.0
32.5	24.80	26.80	6.4	11.0						
Φ7.8 +0.08 -0.15	13.5	4.00	7.00	8.1-8.3	18	4.2	5.2	27	9.1	13.5
	16.5	7.00	10.00						9.1	16.0
	19.5	10.00	13.00						9.1	16.0
	22.5	13.0	16.00						9.1	16.0



Length Unit: mm

d	L	Grip Range		Hole Size	dk	k	d <sub>1</sub>	L <sub>1</sub>	Minimum Compressive	Minimum Shear Force
		min	max	Φ					KN	KN
Φ6.4	13.7	1.50	3.50	6.7-6.9	13.4	3.4	4.2	27	8.8	10.5
+0.08	15.0	2.80	4.80						8.8	12.0
-0.15	15.6	3.35	5.35						8.8	12.5
	17.0	4.80	6.80	6.6-6.8	13.4	3.4	4.2	27	8.8	12.5
	19.0	6.80	8.80						8.8	14.0
	19.7	7.50	9.50						8.8	15.0
	21.0	8.80	10.80						8.8	16.0
	23.0	10.80	12.80						8.8	16.0
	25.0	12.80	14.80	8.8	16.0					